



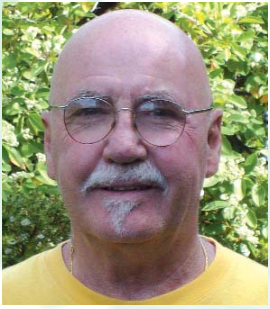
INTERNATIONAL
Natural Medicine Summit
2011

Southee Pavilion
Olympic Park Homebush Bay
14th & 15th May 2011



Embrace Health, Return to Wellness

conference presenters



Welcome by Bill Pearson

Bill is a Vice President of ATMS and has practiced as a TCM practitioner for many years. In 2007 he led the first delegation of ATMS practitioners to China and in April 2010 flew to Beijing to negotiate an exchange program for ATMS with the China Academy of Chinese Medical Sciences. Since then Bill has been productively building a continuing relationship with the Academy which will benefit all ATMS members who take part.

'Living Medicine: Marrying the Art of Healing with the Science of Medicine'

DR GLADYS MCGAREY (USA)

In the United States she is known as the Mother of Holistic Medicine. She is internationally known for her pioneering work in holistic medicine, natural birthing and the physician-patient partnership. Dr. McGarey is past president of the American Holistic Medical Association and the Arizona Board of Homeopathic Medical Examiners; and a Founding Diplomat of the American Board of Holistic Medicine, as well as on the Advisory Board of Arizona State University East. Currently she and her Medical Foundation are actively involved in healthcare reform, and their recently published position papers articulate a new vision for healthcare which is being widely distributed.



'Healing with Heart'

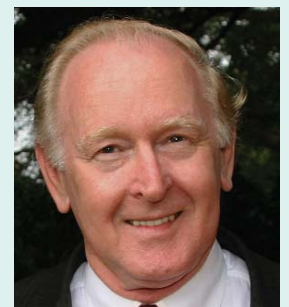
PETREA KING N.D., D.R.M., D.B.M., Dip.Cl.Hyp., I.Y.T.A

Founding Director and CEO of the Quest for Life Foundation, which she established in 1989. She is a well-known author, inspirational keynote speaker, national and international presenter, teacher and facilitator. She is also qualified as a naturopath, herbalist, clinical hypnotherapist, yoga and meditation teacher. Her focus remains on the importance of the therapist/client relationship, and the values of trust, compassion and respect in the treatment process. Petrea's innovative approaches have proved helpful to thousands of people, and she is nationally recognised as a leader in the field of health and wellbeing.

'Quorum Sensing, Health and the Management of Immunology'

PROFESSOR RAY KEARNEY OAM

Department of Infectious Diseases and Immunology University of Sydney. Ray is a member of several professional scientific/medical research organisations. He is a recipient of many Community Awards including a Medal of the Order of Australia (OAM) for his voluntary contributions to public health, his campaigning for cleaner alternative fuels as well as his land-mark contributions in conservation. He has acted as an advisor on numerous committees with his expertise in areas of infectious disease, occupational health, public health and health risk management. His extensive research in the fields of cancer and infectious disease has given rise to national and international lectures.



'Moving Beautifully - Evolving Beyond Core Stability'

JOANNE ELPHINSTON (UK)

Joanne is an international lecturer, author and performance consultant specialising in technical movement optimisation, injury prevention and rehabilitation for treatment-resistant injury in elite athletes, professional dancers and musicians. Drawing from the fields of applied biomechanics and motor control, manual therapy, philosophy and psychology, Joanne addresses movement from a multimodal and holistic perspective. Her clients include elite athletes across a spectrum of sports at national, international and Olympic levels.



'Somatic Distress in the Body'

KENT FRYTH (UK) MCSP, MMACP

Kent has advanced qualifications in manipulative physiotherapy, craniosacral therapy and clinical pilates with Dance Medicine Australia and Somatic Experiencing. Kent applies a holistic philosophy in his treatment of pain and injury, and his breadth of experience ranges from elite sports and performing arts medicine to chronic musculoskeletal pain and headache. Kent lectures on injury prevention for the Royal Welsh College of Music and Drama, and regularly treats professional and developing musicians, and was part of the Welsh medical team at the 2002 Commonwealth Games.

Discussion Group - 'The Client and therapist relationship/partnership'

SANDI ROGERS PhD, ND, DBM

Sandi is a qualified medical herbalist, naturopath, reflexologist, lecturer, massage therapist, and founder & chief executive officer of the National College of Traditional Medicine. Boasting an impressive educational background, Sandi has a Masters in Education and Training, more than a dozen diplomas in natural therapies, and has published many papers and books on complementary medicine. Sandi is also in demand on the corporate speaking circuit with engagements both nationally and international, and is the current President of ATMS.



Discussion Group - 'Food as Medicine'

STEPHEN EDDEY M.H.Sc., B.H.Sc, (Comp.Med), ND.

Stephen is the Principal/CEO of Health Schools Australia. He has lectured nationally and internationally on various health related topics concerning heart disease, obesity, female hormonal conditions, neuro-biochemistry, cancer and immune related disorders and anti-aging seminars, and has published research papers and written practitioner-only seminars for these topics. Stephen is completing a PhD in Nutritional Medicine.

Discussion Group - 'Holistic Treatment for Cancer Prevention'

TERESA MITCHELL-PATERSON MHumNut, DBM; BHSc

Teresa is an accredited naturopathic nutritionist and senior lecturer at the Australasian College of Natural Therapies, who has been practicing for over 25 years. In between practicing and teaching Teresa collaborates on writing books and giving corporate advice in nutritional health. Her professional focus is nutrition and weight maintenance, health and education, and she has appeared at many health and fitness events both nationally and internationally.



Discussion Group - 'Food as Medicine'

DR SHAUN MATTHEWS M.B.Ch. (NUI), Cert. Ayu Med (Gujarat), Cert. Yoga Teacher Training (Bihar).

In 1987 Shaun worked as a doctor in India with Tibetan refugees. Becoming dissatisfied with elements of his training in western medicine, Shaun returned to India in 1992 and studied Ayurveda at Gujarat Ayurveda University and later undertook yoga teacher training at the Bihar School of Yoga. Since 1993 Shaun has been active in teaching Ayurveda, as a science of self-healing, and yoga in Australia, both of which he uses extensively in his clinical practice.

conference program

Saturday 14th May 2011

Registration from 7.45am - 8.45am

Exhibition

8.00am - 5.30pm

Opening of Conference	Bill Pearson	8.45am
Keynote Speaker 1	Petrea King <i>'Healing with Heart'</i>	9.00am - 9.45am
Keynote Speaker 2	Dr Gladys McGarey <i>'Living Medicine: Marrying the art of healing with the science of Medicine'</i>	9.45am - 10.30am

Morning Tea and Exhibition

10.30am - 11.15am

Keynote Speaker 3	Prof. Ray Kearney <i>'Quorum Sensing, Health, and the Management of Immunology'</i>	11.15am - 12.00pm
Keynote Speaker 4	Joanne Elphinston <i>'Moving Beautifully: Evolving Beyond Core Stability'</i>	12.00pm - 12.45pm

Lunch and Exhibition

12.45pm - 2.15pm

Breakout sessions

2.15pm - 3.45pm

Discussion Group

Dr Gladys McGarey,
Valerie Albrecht,
Petrea King &
Sandi Rodgers

*'Living Medicine: Marrying
the art of healing with the
science of Medicine'*

Southee South

Discussion Group

Ray Kearney,
Teresa Mitchell
Paterson &
Giselle Cooke

*'Holistic Treatment for Cancer
Prevention and Cancer
Survivors in order to make the
transition to 'Wellness'*

Southee North

Discussion

Eleanor Oyston
*'Oncology Massage -
A powerful tool, to assist
in the recovering of a
sense of wellbeing in the
face of cancer'*

1822

Workshop

Joanne Elphinston
& Kent Fryth

*'It's More than Core:
The JEMS Approach for
Movement Efficiency'*

Southee 3

Workshop

Rob Granter &
Robert Gammal

*'The Relationship Between
Dental Health and Soft
Tissue Structures'*

Southee 5

Afternoon Tea and Exhibition

3.45pm - 4.15pm

Keynote Speaker 5	Valerie Albrecht <i>'Oneness in Health Care'</i>	4.15pm - 4.50pm
Close	Sandi Rogers	

SEE THE REGISTRATION FORM TO BOOK FOR SATURDAY NIGHTS DINNER

ATMS is grateful for the Sponsors' support of the high quality speakers brought together for the International natural medicine summit.



Nature Care College



**AUSTRALASIAN
COLLEGE OF
NATURAL THERAPIES**

Sunday 15th May 2011

Exhibition Open

8.00am

Welcome back	Sandi Rogers & Bill Pearson	8.45am
Keynote Speaker 6	Prof Lindsay Brown <i>'Food as Medicine'</i>	9.00am - 9.45am
Keynote Speaker 7	Kent Fryth <i>'When the Past Blocks the Journey to wellness: Somatic Distress in the Body'</i>	9.45am - 10.30am

Morning Tea and Exhibition

10.30am - 11.15am

Keynote Speaker 8	Robert Gammal <i>'The Relationship between Dental Health and Wellness'</i>	11.15am - 12.00pm
Keynote Speaker 9	Giselle Cooke <i>'Raising naturally Healthy Children in a Chemical World'</i>	12.00pm - 12.45pm

Lunch and Exhibition

12.45pm - 2.15pm

Breakout sessions

2.15pm - 3.45pm

Discussion Group

Dr Gladys McGarey,
Valerie Albrecht,
Petrea King &
Sandi Rodgers

'Healing with the Heart'

Southee South

Discussion Group

Prof Lindsay Brown,
Stephen Eddey,
Giselle Cooke &
Dr Shaun Matthews

'Food as Medicine'

Southee North

Discussion

Eleanor Oyston
*'Oncology Massage -
A powerful tool, to assist
in the recovering of a
sense of wellbeing in the
face of cancer'*

1822

Workshop

Joanne Elphinston
& Kent Fryth

*'It's More than Core:
The JEMS Approach for
Movement Efficiency'*

Southee 3

Workshop

Rob Granter &
Robert Gammal

*'The Relationship Between
Dental Health and Soft
Tissue Structures'*

Southee 5

Afternoon Tea and Exhibition

3.45pm - 4.15pm

CLOSE OF CONFERENCE

ATMS President Sandi Rogers

Australian Traditional Medicine Society

PO Box 1027, Meadowbank NSW 2114

Tel + 61 2 9809 6800 Fax + 61 2 9809 7570 info@atms.com.au www.atms.com.au

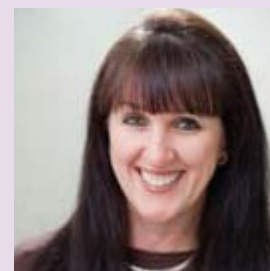


conference presenters

'Raising Naturally Healthy Children in a Chemical World'

GISELLE COOKE Dip. Acup., D.B.M

Giselle has lectured at Macquarie University at the School of Chiropractic, the Australasian College of Nutritional and Environmental Medicine and to various medical, nursing and other colleges on alternative medicine. She has delivered lectures throughout Australia, New Zealand, the United States and in Malaysia. Giselle served on the executive of the Australian Complementary Medicine Association, was Convenor of Health Network Australia and spokesperson for the Complementary Health Care Council, and she has a practice in Sydney.



'The Relationship Between Dental Health and Wellness'

ROBERT GAMMAL BDS

Robert, as a Bio Compatible Dentist, believes holistically, that dental issues may be the result of imbalance or stress elsewhere in the body, and likewise, symptoms or imbalances elsewhere in the body may be caused by problems in the mouth. Robert co-founded the Australian Society of Oral Medicine and Toxicology and is part of a program providing information on the problems associated with mercury amalgam and root canal therapy.

'Discussion Group - The Client and Therapist Relationship/Partnership'

VALERIE ALBRECHT Bachelor of Speech and Hearing Pathology, with a double major in psychology

Valerie has presented at International Conferences concerning Yoga Birthing, Search for Mother, Writing Trauma Out of the Body and Oneness in Health Care. She has taught yoga in Portugal, India and America, worked with obstetricians in rural Rajasthan India, and trained pre-natal yoga teachers in India. Valerie presented for Birth India at their 2008 international conference for Indian Caesarean Awareness Week.



'Food as Medicine'

PROFESSOR LINDSAY BROWN BPharm & PhD in Philosophy.

University of Queensland, Adjunct Associate Professor in the School of Biomedical Sciences and Professor of Biomedical Sciences at the University of Southern Queensland. At both universities his major areas of interest have been teaching and research in pharmacology, the science of drug reactions. His recent research has been in the area of chronic human diseases such as obesity, diabetes, hypertension and arthritis and seeks to determine whether natural compounds or synthetic chemicals can prevent or reverse organ damage.

'Discussion Group - Relationships Between Dental Health & Soft Tissue Structures'

ROB GRANTER Principal of The Australasian College of Soft Tissue Therapy

Rob has had 23 years experience in remedial massage/soft tissue therapy within clinical sports medicine practice and currently teaches in the Myotherapy program at RMIT University. Rob is regarded as one of the key figures in seeing soft tissue therapy integrated into the Australian Multidisciplinary Sports Medicine Model and was head of Massage Therapy Services to the Australian Olympic team in 1996 and 2000 and the Australian Commonwealth Games team for Kuala Lumpur in 1998. He co-coordinated Massage Therapy Services for the Polyclinic and Competition Venues for the 2006 Commonwealth Games in Melbourne.



'Discussion Group - Oncology Massage and Cancer Treatment'

ELEANOR OYSTON

Eleanor is a cytotechnologist, massage therapist and bowen practitioner who had a distinguished career in pathology and medical research. For ten years Eleanor was the technical manager of a developmental neuroscience research laboratory at the John Curtin School of Medical Research at the Australian National University in Canberra, and for the last 7 years she has worked with Petrea King at Quest for Life Centre bringing a unique understanding to tactile therapies.

other information



HOTEL ACCOMMODATION INFORMATION

ATMS Delegates and Exhibitors have access to a discounted accommodation during the Conference - 10% off the best unrestricted rate of the day, at hotels Pullman, Novotel and Ibis in Olympic Park. Simply quote the code "ATMS" when making your booking.

CAR PARKING INFORMATION

The Parking Station closest to us is P1, at a cost of \$20 per day. Alternatively very good train and bus transport is available.

Thank you to Firm N Fold for the generous use of their massage tables during the Conference

Excellence

In Herbal Medicine Since 1885

- ✓ Leading suppliers of over 180 1:1 liquid extracts
- ✓ High quality cold processing in TGA licenced facilities
- ✓ Australian family owned and operated for over 120 years
- ✓ Starter kits for newly qualified practitioners

CALL 1300 443 727
FOR A CATALOGUE
NOW!

www.herbalextracts.com.au



THE
**HERBAL
EXTRACT**
COMPANY OF AUSTRALIA

NEW from InterClinical Laboratories **HEAVY METAL and FREE RADICAL TEST KITS**

Leading provider of professional products and services including;

- Reliable Hair Tissue Mineral Analysis pathology
- Advanced nutritional, herbal and natural medicines
- In-house heavy metal and free radical test kits

InterClinical Laboratories is a proud long term supporter of ATMS and their members. *We thank you for your ongoing support.*



InterClinical Laboratories

Please contact us for a free practitioner information and referral kit.

Ph: (02) 9693 2888 Email: lab@interclinical.com.au www.interclinical.com.au



TVW 6840

EXHIBITORS LIST

1. Select Botanicals
2. FX Med
6. Firm N Fold
7. Select Botanicals
8. ACNT
11. Iris Tech
12. Herbal Extract
13. Natural Therapy pages
14. Interclinical Labs
18. Enlightened Therapies
19. Integria
20. Eyeronec
21. Pain Relief
22. Nature Care College
23. Practice Mastery Inst.
28. Eyeronec
29. Metagenics
30. TMS
31. Blackmores
33. Golden Integrative Medicine
34. Wildcraft Dispensary
35. Endeavour College
36. Bioceticals
37. Quest For Life
39. BioConcepts
40. ATMS
- T1. Swedenborg Centre
- T2. Dr Red
- T3. Terra Rosa
- T4. ATMS News
- T5. Academy of Craniosacral
- T6. Athlegen
- T7. Phoenix Rising Books
- T8. Yoga in Daily Life



Win the "ATHLEGEN PRIZE" of an Electric Massage Table valued at \$3500 - to be drawn at the Conference



Australia's #1 natural health site

FREE 30 day listing



--Find a Practitioner--

11,000 practitioners around Australia are being found locally in their area - would you like to be found? Try ntpages.com.au free for 30 Days - call 1300 762 991 and mention ATMS.

--View Practitioner Videos--

View videos of natural health practitioners. For information on how you can have a practitioner video, visit ntpages.com.au/video_service

--Find a Product--

Purchase natural health products from some of Australia's leading natural health businesses.

--Find a School--

Research schools, colleges and courses to study the modality of your choice.

--Find a Room to Rent--

Find a clinic room to rent or any positions vacant in your local area.



Visit us on YouTube
Check out modality descriptions and practitioner videos on Natural Therapy Pages TV - www.youtube.com/ntpagestv



Visit us on Facebook
Connect with the natural therapy community on our Facebook page - www.facebook.com/ntpages



Natural Therapy Pages
ntpages.com.au

For advertising enquiries call: 1300 762 991

